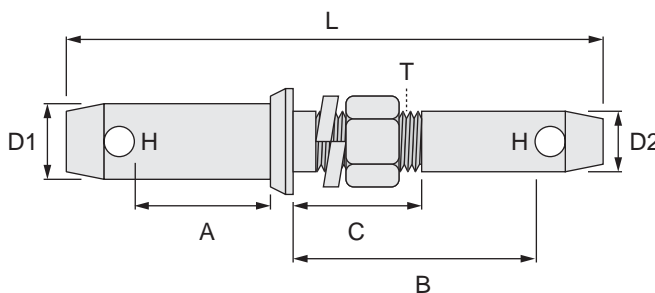


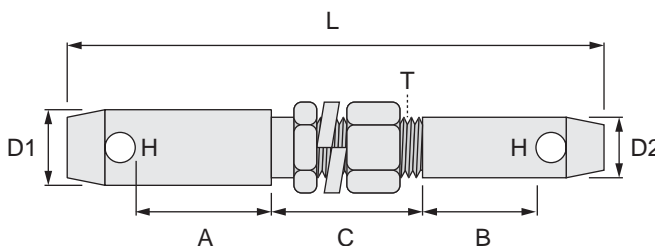
Mounting Pins - Threaded

TYPE	DIAMETER		THREAD SIZE	THREAD LENGTH	USABLE LENGTH	SHOULDER	SHOULDER DEPTH	HOLE SIZE	PART NUMBER
	D1	T	B	A	S	F			
CAT 1	22	7/8"	3/4" UNF	48	44.8	19	6.3	12	P298
CAT 1	22	7/8"	5/8" UNF	35	44.8	22	11	12	P299
CAT 1	22	7/8"	7/8" UNF	39.7	44.8	22	12	12	P300
CAT 1	22	7/8"	7/8" UNF	33	44.8	28.6	22	12	P301
CAT 2	28.6	1 1/8"	3/4" UNF	54	54	19	6.3	12	P305
CAT 2	28.6	1 1/8"	7/8" UNF	35	54	22	12.7	12	P302
CAT 2	28.6	1 1/8"	7/8" UNF	35	54	28.6	22	12	P303



Mounting Pin - Double

DIAMETER	DIAMETER	LENGTH	THREAD SIZE	THREAD LENGTH	USABLE LENGTH	LENGTH	HOLE SIZE	PART NUMBER
D1	D2	L	1 1/8" UNC	C	A	B	H	P306
28.6	22	197		38	56	83	12	



Mounting Pin - Double

DIAMETER	DIAMETER	LENGTH	THREAD SIZE	LENGTH	USABLE LENGTH	USABLE LENGTH	HOLE SIZE	PART NUMBER
D1	D2	L	T	C	A	B	H	P310
28.6	22	203	1" UNF	59	54	44.8	12	