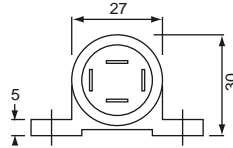


Push Switch

Short Term Load: 12V = 20 A
24V = 15 A

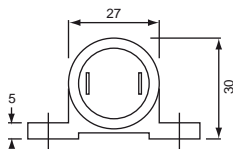
DESCRIPTION	PART NUMBER
Push switch	6JF001571001



COBO Push switch

Principle Application: Claas Round Baler

DESCRIPTION	PART NUMBER
Push switch (sensor)	1716000018



COBO Push switch

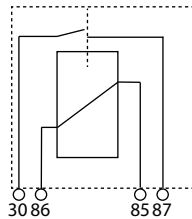
DESCRIPTION	PART NUMBER
Push switch	17162000



COBO Brake light switch

Principle Application: New Holland TM Series

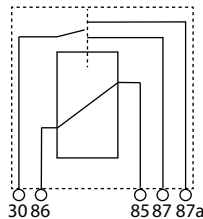
DESCRIPTION	PART NUMBER
Brake light switch	1501660000



4 Pin Relay

• 30A

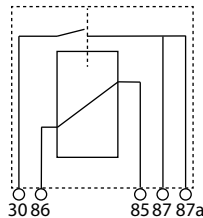
DESCRIPTION	PART NUMBER
4 pin relay - 30A	LA16091



5 Pin Change Over Relay

• 30A

DESCRIPTION	PART NUMBER
5 Pin change over relay - 30A	LA16092



5 Pin Headlight Relay

• 30A

DESCRIPTION	PART NUMBER
5 Pin headlight relay - 30A	LA16093