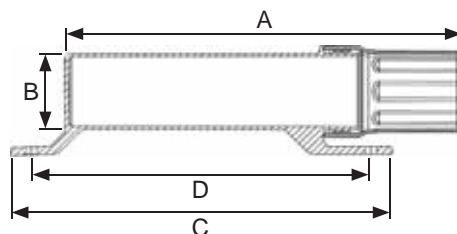




### Vehicle Mounted Tool Box

- Length: 370mm
- Width: 150mm
- Height: 140mm

DESCRIPTION	PART NUMBER
PVC Tool Box	H123005



### Document Holder

DESCRIPTION	A	B	C	D	PART NUMBER
Small document holder	317	60	301.6	268.4	10402
Medium document holder	350	90	365	315	10404

Removeable soap dispenser



Water tap

### Water Tank (25 Litre) with Soap Dispenser

25 litre Water tank with tap and integrated soap dispenser that can easily be removed for refilling. Suitable for mounting on slurry tankers, trailers and other farming and industrial machinery.

- Soap dispenser is suitable for alcohol based solutions
- Tank made from non-toxic PE, enriched with anti-UV additive
- Side tap (3/4") to avoid possible impacts

- Width: 300mm
- Depth: 495mm
- Height: 303mm

DESCRIPTION	PART NUMBER
25 Litre water tank with soap dispenser	WT25

### Mounting Supports to suit WT25

The mounting supports are hot dip galvanized which helps prevent rust, salt corrosion and scratches.

Supplied complete with bolts and nuts for fitting.

- Length: 455mm
- Height: 82 / 158mm
- Thickness: 3mm

DESCRIPTION	PART NUMBER
Mounting support to suit WT25 (pair)	WT25SUPPORT

### Parts to suit WT25 Water Tank

DESCRIPTION	PART NUMBER
Replacement soap dispenser to suit WT25 water tank	WT25SOAP
Replacement tap to suit WT25 water tank	WT25TAP
Cap to suit WT25 water tank	WT25CAP