


Faster Standard BSP Flat Face Quick Release Coupling

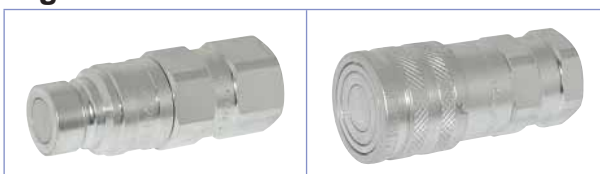
- Connection system: Pushing the male coupling
- Disconnection system: Pulling back the sleeve
- Connectability: Without pressure
- Disconnection under pressure: Not allowed
- Shut-off system: Flat valve (male coupling with double valve)
- Interchangeable: According to ISO 16028 and HTMA standard




FEMALE THREAD	BASE		FLOW RATE	MAX WORKING PRESSURE	MALE PART NUMBER	FEMALE PART NUMBER
1/4" BSP	04	16mm	20 lpm	320 bar	2FFI14GASM	2FFI14GASF
3/8" BSP	06	20mm	68 lpm	250 bar	FFN38GASMU	FFN38GASF
1/2" BSP	06	20mm	68 lpm	250 bar	FFN3812GASMU	2FFN3812GASF
3/4" BSP	08	25mm	100 lpm	250 bar	FFI1234GASM	2FFI1234GASF
1" BSP	12	30mm	160 lpm	270 bar	FFI341GASM	2FFI341GASF
1 1/4" BSP	16	36mm	210 lpm	250 bar	FFI1114GASM	2FFI1114GASF

Faster Hi Flow BSP Flat Face Quick Release Coupling

- Connection system: Pushing the male coupling
- Disconnection system: Pulling back the sleeve
- Connectability: Without pressure
- Disconnection under pressure: Not allowed
- Shut-off system: Flat valve (male coupling with double valve)
- Interchangeable: According to ISO 16028 and HTMA standard




FEMALE THREAD	BASE		FLOW RATE	MAX WORKING PRESSURE	MALE PART NUMBER	FEMALE PART NUMBER
1/2" BSP	08	25mm	100 lpm	250 bar	2FFI12GASM	2FFI12GASF
3/4" BSP	12	30mm	160 lpm	250 bar	FFI34GASM	2FFI34GASF
1" BSP	16	36mm	210 lpm	250 bar	FFI1GASM	2FFI1GASF

Faster Heavy Duty Hi Flow BSP Flat Face Quick Release Coupling

For applications with repeated shock and vibrations

- Connection system: Pushing the male coupling
- Disconnection system: Pulling back the sleeve
- Connectability: Without pressure
- Disconnection under pressure: Not allowed
- Shut-off system: Flat valve
- Interchangeable: According to ISO 16028 and HTMA standard (except for 1 1/2")



FEMALE THREAD	BASE		FLOW RATE	MAX WORKING PRESSURE	MALE PART NUMBER	FEMALE PART NUMBER
3/4" BSP	12	30mm	160 lpm	250 bar	For Male use FFI series (Shown Above)	2FSI34GASF