



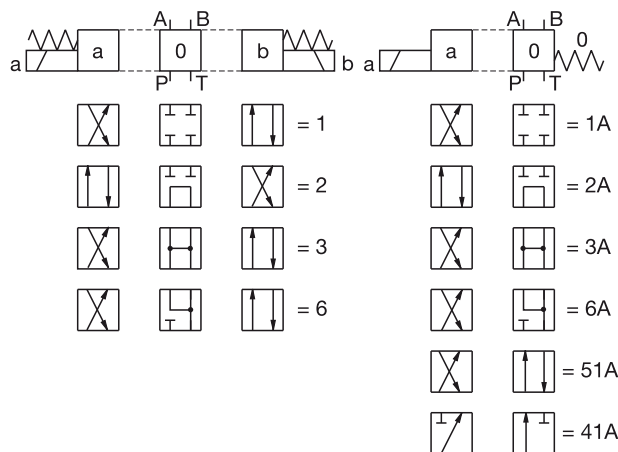
### Cetop 03 Directional Solenoid Valve 12V

Maximum pressure: A, B, P 315 bar  
 T 160 bar  
 Maximum flow rate: 60 lpm

Supplied with screw set (M5x45) and electrical connector with LED

Spare coils listed on page 93

Spool types



WORKING PORTS	No. OF CONTROL SPOOL POSITIONS	SPOOL TYPES	OPERATING PRESSURE		PART NUMBER
			PORTS P, A, B	PORT T	
4	3	1	315	160	CV03-1-12V
4	2	1A	315	160	CV03-1A-12V
4	3	2	315	160	CV03-2-12V
4	2	2A	315	160	CV03-2A-12V
4	3	3	315	160	CV03-3-12V
4	2	3A	315	160	CV03-3A-12V
3	2	41A	315	160	CV03-41A-12V
4	2	51A	315	160	CV03-51A-12V
4	3	6	315	160	CV03-6-12V
4	2	6A	315	160	CV03-6A-12V

Note: Specialised variations are available.

Contact our Sales Staff if the requirements of the valve you need does not appear in this table.

Also available in 24V, 110V-AC and 230V-AC.

Torque values:

- Torque for the front of valve x4 mounting screws is 15-20Nm
- Torque on the bolts to assemble is 20Nm,
- Torque for the steel plug is 55-70Nm

### Cetop 03 Manifold c/w Relief Valve

Supplied with mounting bracket

Pressure adjustment: 20-250 bar  
 Maximum flow rate: 40 lpm

Note: If not using port G (test / gauge port )  
 order **7260-04** 1/4" blanking plug



BANKS	PORTS			DIMENSIONS			PART NUMBER
	A, B	P, T	G	LENGTH	HEIGHT	WIDTH	
2	3/8"	1/2"	1/4"	120	70	70	CM03-2RV
3	3/8"	1/2"	1/4"	170	70	70	CM03-3RV
4	3/8"	1/2"	1/4"	220	70	70	CM03-4RV
5	3/8"	1/2"	1/4"	270	70	70	CM03-5RV
6	3/8"	1/2"	1/4"	320	70	70	CM03-6RV
7	3/8"	1/2"	1/4"	370	70	70	CM03-7RV
8	3/8"	1/2"	1/4"	420	70	70	CM03-8RV
9	3/8"	1/2"	1/4"	470	70	70	CM03-9RV
10	3/8"	1/2"	1/4"	520	70	70	CM03-10RV