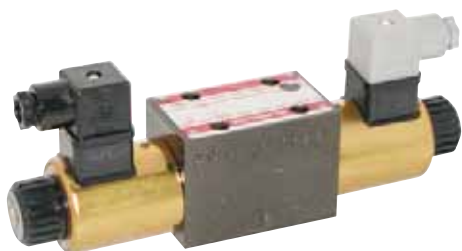


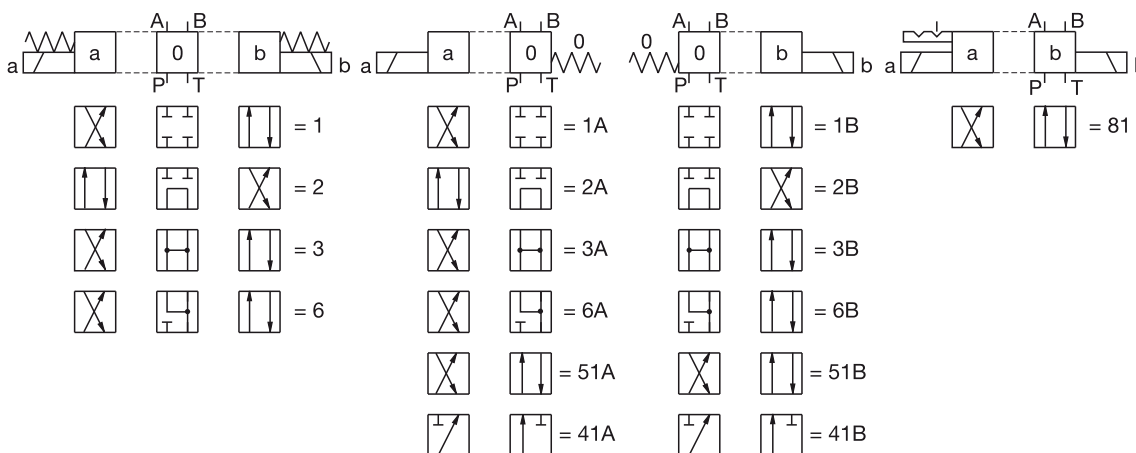
Cetop 03 Directional Solenoid Valve



Direct operation by solenoid
 5 chamber model with good spool guidance
 Optimized flow paths for low losses of pressure
 Wet pin solenoid with interchangeable coil
 Manual emergency control

Maximum pressure: 350 bar
 Maximum flow rate: 60 lpm
 Oil temperature range: -20° to +70°C
 Viscosity range: 15 to 380 mm²/s

Spool types



WORKING PORTS	No. OF CONTROL SPOOL POSITIONS	SPOOL TYPES	OPERATING PRESSURE		12V PART NUMBER	24V PART NUMBER
			PORTS P, A, B	PORTS T		
4	3	1	350	250	SEV03C2012C	SEV03C2024C
4	2	1A	350	250	SEV03C2B012C	SEV03C2B024C
4	2	1B	350	250	-	KV031B24V
4	3	2	350	250	SEV03C6012C	SEV03C6024C
4	2	2A	350	250	SEV03C6B012C	SEV03C6B024C
4	2	2B	350	250	-	KV032B24V
4	3	3	350	250	SEV03C3012C	SEV03C3024C
4	2	3A	350	250	SEV03C3B012C	-
4	2	3B	350	250	KV033B12V	KV033B24V
3	2	41A	350	250	SEV03B20012C	SEV03B20024C
3	2	41B	350	250	-	KV0341B24V
4	2	51A	350	250	SEV03B2012C	SEV03B2024C
4	2	51B	350	250	SEV03B2S012C	SEV03B2S024C
4	3	6	350	250	SEV03C4012C	SEV03C4024C
4	2	6A	350	250	SEV03C4B012C	SEV03C4B024C
4	2	6B	350	250	-	KV036B24V
4	2	81	350	250	SEV03D2B012C	SEV03D2B024C

Note: Specialised variations are available. Contact our Sales Staff if the requirements of the value you need does not appear in this table.

Also available in 110V-AC and 230V-AC.

Torque values:

- Torque for the front of valve x4 mounting screws is 15-20Nm
- Torque on the bolts to assemble is 20Nm,
- Torque for the steel plug is 55-70Nm