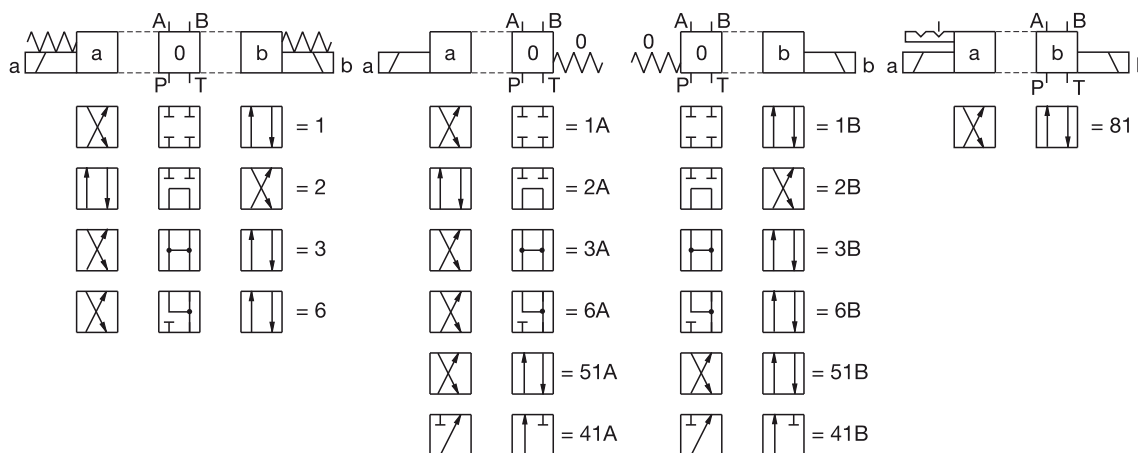


Cetop 05 Directional Solenoid Valve

Direct operation by solenoid
 5 chamber model with good spool guidance
 Optimized flow paths for low losses of pressure
 Wet pin solenoid with interchangeable coil
 Manual emergency control

Maximum pressure: 350 bar
 Maximum flow rate: 100 lpm
 Oil temperature range: -20° to +70°C
 Viscosity range: 15 to 380 mm²/s

Spool types



WORKING PORTS	No. OF CONTROL SPOOL POSITIONS	SPOOL TYPES	OPERATING PRESSURE		12V PART NUMBER	24V PART NUMBER
			PORTS P, A, B	PORTS T		
4	3	1	350	250	SEV05C2012C	SEV05C2024C
4	2	1A	350	250	SEV05C2B012C	SEV05C2B024C
4	2	1B	350	250	KV051B12V	KV051B24V
4	3	2	350	250	SEV05C6012C	SEV05C6024C
4	2	2A	350	250	SEV05CB6012C	SEV05CB6024C
4	2	2B	350	250	KV052B12V	KV052B24V
4	3	3	350	250	SEV05C3012C	SEV05C3024C
4	2	3A	350	250	SEV05C3B012C	SEV05C3B024C
4	2	3B	350	250	KV053B12V	KV053B24V
3	2	41A	350	250	SEV05B20012C	SEV05B20024C
3	2	41B	350	250	KV0541B12V	KV0541B24V
4	2	51A	350	250	KV0551A12V	KV0551A24V
4	2	51B	350	250	SEV05B2S012C	SEV05B2S024C
4	3	6	350	250	SEV05C4012C	SEV05C4024C
4	2	6A	350	250	SEV05C4B012C	SEV05C4B024C
4	2	6B	350	250	KV056B12V	KV056B24V
4	2	81	350	250	SEV05D2B012C	SEV05D2B024C

Note: Specialised variations are available. Contact our Sales Staff if the requirements of the value you need does not appear in this table.

Also available in 110V-AC and 230V-AC.

Torque values:

- Torque for the front of valve x4 mounting screws is 15-20Nm
- Torque on the bolts to assemble is 20Nm,
- Torque for the steel plug is 55-70Nm