



### Single Subplate

Max Work Pressure: 310 bar  
 Connection: Side ports

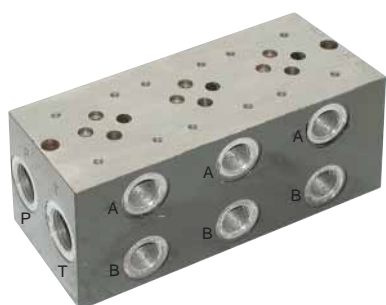
No.	BANKS	FLOW	PORTS	PORT LAYOUT	PART NUMBER
1	1	35 lpm	3/8" BSP	A + T + B + P	ES3DL38L1
2	1	60 lpm	1/2" BSP	A + B / P + T	ES5B12LLY



### Single Subplate c/w Relief Valve

Max Work Pressure: 220 bar  
 Connection: P + T Bottom, A + B Side

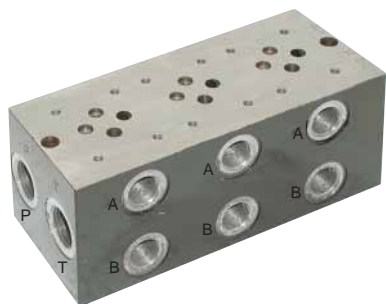
BANKS	FLOW	PORTS	PORT LAYOUT	PRESSURE GAUGE PORT	PART NUMBER
1	35 lpm	3/8" BSP	A + T + B + P	1/4" BSP	PBL6VMP
1	60 lpm	1/2" BSP	A + B / P + T	1/4" BSP	PBL10VMP



### Cetop 03 Multi Subplate

Max Flow: 40 lpm  
 Max working pressure: 310 bar

TYPE	BANKS	LENGTH	PORTS		PART NUMBER
			A, B	P, T	
GZ	1	70mm	3/8" BSP	1/2" BSP	MR31GZ
GZ	2	120mm	3/8" BSP	1/2" BSP	MR32GZ
GZ	3	170mm	3/8" BSP	1/2" BSP	MR33GZ
GZ	4	220mm	3/8" BSP	1/2" BSP	MR34GZ
GZ	5	270mm	3/8" BSP	1/2" BSP	MR35GZ
GZ	6	320mm	3/8" BSP	1/2" BSP	MR36GZ
GZ	7	370mm	3/8" BSP	1/2" BSP	MR37GZ



### Cetop 03 Multi Subplate with Cartridge Port

Max Flow: 40 lpm  
 Max working pressure: 310 bar

TYPE	BANKS	LENGTH	PORTS		PART NUMBER
			A, B	P, T	
GZC	2	120mm	3/8" BSP	1/2" BSP	MR32GZC
GZC	3	170mm	3/8" BSP	1/2" BSP	MR33GZC
GZC	4	220mm	3/8" BSP	1/2" BSP	MR34GZC
GZC	6	320mm	3/8" BSP	1/2" BSP	MR36GZC
GZC	7	370mm	3/8" BSP	1/2" BSP	MR37GZC
GZC	8	420mm	3/8" BSP	1/2" BSP	MR38GZC