

Cetop Relief Valve Cartridge

LENGTH	B	FLOW	BODY HEX SIZE	MAX PRESSURE	FEATHER RANGE	TORQUE	TO SUIT CETOP VALVE	PART NUMBER
105	44.5	151 lpm	31.8	207 bar	41-248 bar	115-122 Nm	05	CP2011B0AC



Unloader Valve 2/2 Cartridge Type Less Solenoid

TO SUIT CETOP VALVE	PART NUMBER
03	SVP10NO00B00
05	CP5012B0NO



Solenoid Coil for Cetop 03

TO SUIT CETOP VALVE	VOLTAGE	PART NUMBER
03	12V DC	SD9M1612D26WDN
03	24V DC	SD9M1624D26WDN

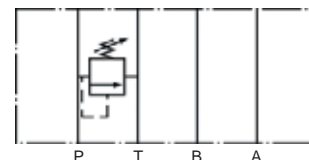
Solenoid Coil for Cetop 05

TO SUIT CETOP VALVE	VOLTAGE	PART NUMBER
05	12V DC	CP95012
05	24V DC	CP95024
05	110V AC	CP950110



Cetop Pressure Relief Valve

	CETOP03	CETOP05
Flow Rate:	60 lpm	100 lpm
Pressure Range:	40-250 bar	20-210 bar
Max Pressure:	320 bar	320 bar
Thickness:	40mm	50mm

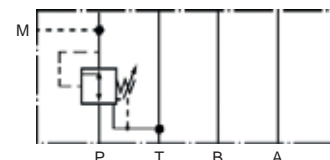


TO SUIT CETOP VALVE	PART NUMBER
03	SMRF03P3
05	SMRF05P3



Cetop Pressure Reducing Valve

	CETOP03	CETOP05
Flow Rate:	60 lpm	80 lpm
Pressure Range:	60-280 bar	10-210 bar
Max Pressure:	320 bar	320 bar
Thickness:	40mm	50mm



TO SUIT CETOP VALVE	PART NUMBER
03	SMPR03P3
05	SMPR05P3