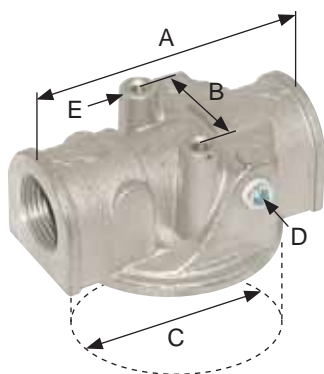


Suction Filter - Type FS1

- Suction filters are suitable for use in the suction line, submerged
 - Protects pump against coarse pollution
- Temperature: -25°C to +100°C
 Material: Head - nylon, End cap - carbon steel, Filter - wire mesh
 Seals: NBR, viton on request
 Mounting: Threaded port (BSP) on the suction pipe of the pump.
 Filtering: From outside to inside
 Fluid compatibility: ISO2943: Filter assembly compatible with mineral oils and some synthetic or vegetable oils

DIMENSIONS			FILTER FINENESS	FEMALE THREAD	MAX FLOW	PART NUMBER
A	B Ø	C				
106	46	36	125	1/2" BSP	35 lpm	FS111T125
109	64	50	125	3/4" BSP	52 lpm	FS120T125
139	64	50	125	1" BSP	100 lpm	FS121T125
139	86	65	125	1 1/4" BSP	160 lpm	FS131T125
200	86	65	125	1 1/2" BSP	215 lpm	FS133T125



Spin-On Filter / Filter Head

- Working pressure: 12 bar
 Temperature: -25°C to +110°C
 Material: Housing: Aluminium
 Seals: NBR, viton on request
 Mounting: Suited for in-line mounting. Spin-on

TYPE	FEMALE THREAD	SUITS FILTER	DIMENSIONS					PART NUMBER
			A	B	C	D	E	
Return	3/4" BSP	CS050 / 70	95	38	75	1/8"	M6	MPS9050RG1
Suction	3/4" BSP	CS050 / 70	95	38	75	1/8"	M6	MPS9050SG1
Return	1 1/4" BSP	CS0100 / 150	133	50	133	1/8"	M6	MPS9100RG1
Suction	1 1/4" BSP	CS0100 / 150	133	50	133	1/8"	M6	MPS9100SG1



Spin-On Suction / Return Line Filter

- Application: Pipe suction or return filter
 Seals: NBR, viton on request
 Temperature: -25°C to +110°C
 Suitable for: Mineral oil
 Max Operating Pressure: 12 bar
 Note: Glass fibre available on request

TYPE	FILTER FINENESS	A	B	THREAD	PART NUMBER
CS050	P10 (paper)	142	94	3/4" BSP	HF6173
CS050	P25 (paper)	142	94	3/4" BSP	HF35102
CS070	P25 (paper)	205	94	3/4" BSP	HF6538
CS100	P10 (paper)	180	128	1 1/4" BSP	HF6177
CS100	P25 (paper)	180	128	1 1/4" BSP	HF7835
CS150	P10 (paper)	226	128	1 1/4" BSP	HF35082
CS150	P25 (paper)	231	132	1 1/4" BSP	HF6359